



**TECHNICAL
BROCHURE**

UL 2C

2 M³ BUCKET VOLUME, 4 TONS TRAMMING CAPACITY

UNDERGROUND LOADER SUITABLE FOR WORKING IN NARROW VEINS



KARER UL 2C is a very compact and lightweight underground loader (LHD) for narrow-vein underground mining operations.

Its fast and easy loading features offer its users the highest possible efficiency.

KARER UL 2C offers operators very good visibility and safe use. It has fast and safe maneuverability in narrow veins.

The loader is easy to use and maintain. All maintenance points are very well protected and easily accessible.

You have peace of mind with the high-efficiency, low-fuel consumption, easy-to-access spare parts DEUTZ (Germany) brand engine.

It improves the working environment in terms of noise and emissions thanks to silencer, DOC + POC catalysts and DEUTZ brand engine.

CAPACITIES	
Bucket Volume	2 m ³
Tramming	4,000 kg
Max Breakout Force, Lift	85,000 N
Max Breakout Force, Tilt	104,000 N
Oscillation	8°

DIMENSIONS	
Length*Width*Height	718*175*213cm
Min. Ground Clearance	46 cm
Max Lift Height	400 cm
Max Unloading Height	148 cm

MOVEMENT TIMES	
Raising	6.3 second
Lowering	4.0 second
Dumping	3.6 second

SPEEDS	
Speed (1st Gear)	4.4 km/h
Speed (2nd Gear)	16.0 km/h
Speed (3rd Gear)	25.0 km/h

WEIGHTS	
Operating Weight	11,020 kg
Loaded Weight	15,020 kg
Front Axle (Unloaded)	4,670 kg
Rear Axle (Unloaded)	6,350 kg
Front Axle (Loaded)	11,400 kg
Rear Axle (Loaded)	3,620 kg

* Machine weight may vary depending on options

TRANSMISSION	
Type	Modulated transmission gearbox Torque Converter
Brand	DANA
Brand	CLARK

AXLES	
Brand	KARER
Front Axle	Locked - SAHR
Rear Axle	Standard - SAHR

BRAKES	
Service brake, spring-hydraulic release (SAHR), fully enclosed, multiple wet discs at each wheel end	
Parking brake, spring-hydraulic release (SAHR), fully enclosed, multiple wet discs at each wheel end	
Emergency brake, spring-hydraulic release (SAHR), fully enclosed, multiple wet discs at each wheel end	
Manual emergency brake release pump is standard. In case of diesel engine failure, loader can be easily withdrawn from tunnel	

ENGINE	
Model	DEUTZ BF4M1013FC
Type	Water Cooled
Power	118kW (158 HP) @2300rpm
Max. Tork	577 Nm@1400rpm
Cylinder	In Line 4
Electric	24 V
Emission	Stage II
Air Intake	Low Position Turbocharger and Dry Type Air Filter (pre-filter) + Return and Intake Filtration
Exhaust System	Silencer + Catalytic Converter

TANK CAPACITIES	
Fuel Tank	170 liters
Hydraulic Oil Tank	170 liters

ELECTRIC	
Battery	1 * 165 / 180 AH
Starter	4 kW / 24 V
Horn/Reverse siren is standard	
Flashing warning lights are standard	
Driving Lights	
Front View (Canopy Top)	2 pcs LED
Front (on the boom)	2 pcs LED
Rear View	2 pcs LED

CANOPY	
Washable canopy floor to reduce dust	
Ergonomic suspension seat and armrest	
Seating area with very good two-way visibility and comfortable use during work	

DASHBOARD

The dashboard can display vehicle parameters and various alarm information, so that the operator can understand the real-time status of the loader, operate the loader more efficiently and safely

Warning and alarm systems have audible and light warnings

WHEELS

Tires	12.00 R24 L-5 / L-5S
-------	----------------------

FRAME (CHASSIS)

High strength, heavy impact and load resistant steel structure with optimized material thickness

Heavy-duty design of the rear frame better secures the loader when lifting and shoveling ore

Bucket made of high strength, wear-resistant steel

Improved boom and load frame geometry to optimize performance

Seating area that provides a very good two-way view and comfortable use during work

Bolted and welded tanks

HYDRAULICS

When the loader stops, the axles are braked as standard

WALVOIL (Italy) brand high quality control joystick

WALVOIL (Italy) brand high quality control valves

Hydraulic oil cooler

BOSCH REXROTH (Germany) or HYTEK brand heavy-duty gear pump

Two double acting cylinders with center point joint

Lifting boom system has two cylinders

Dumping boom system has one cylinder

Joystick controlled bucket and boom movements

Release brakes with hand pump

Oil level indicator

STEERING

Joystick is equipped with gear pump that supplies oil to bucket hydraulic main valve

Steering main valve is center open center type

CASAPPA (Italy) brand hydraulic pump is used for steering

Heavy-duty gear pumps from BOSCH REXROTH (Germany) or HYTEK are used for boom and bucket control

WORKING ENVIRONMENT CONDITIONS

Temperature	-15°C ~ +45°C
Altitude	When working at -1,500~+3,000 meters, there is no loss of motor power when the temperature is not higher than 25°C

OPTIONS

Remote control system from line of sight

Automatic dry powder fire extinguishing system

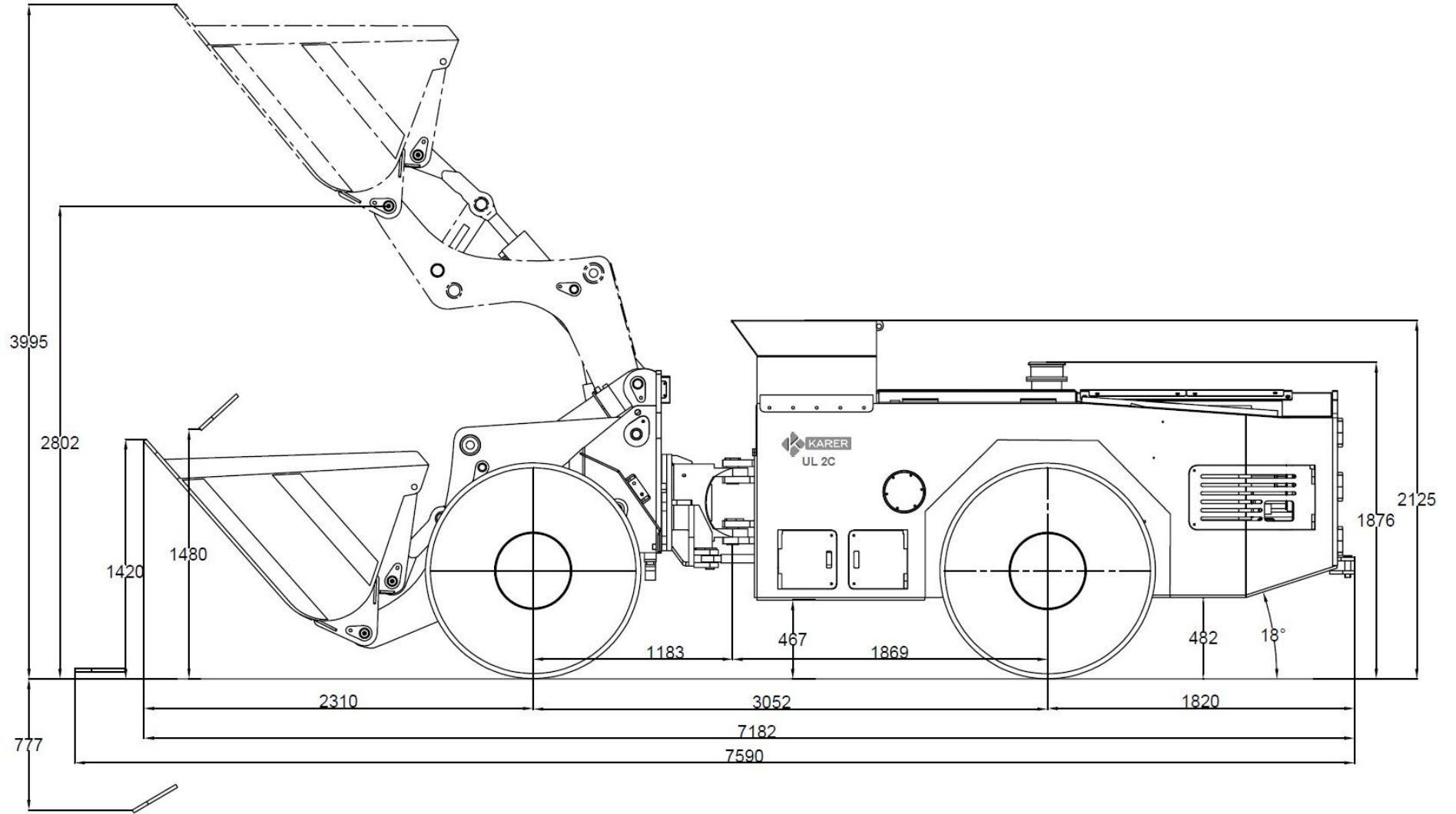
Automatic central lubrication system

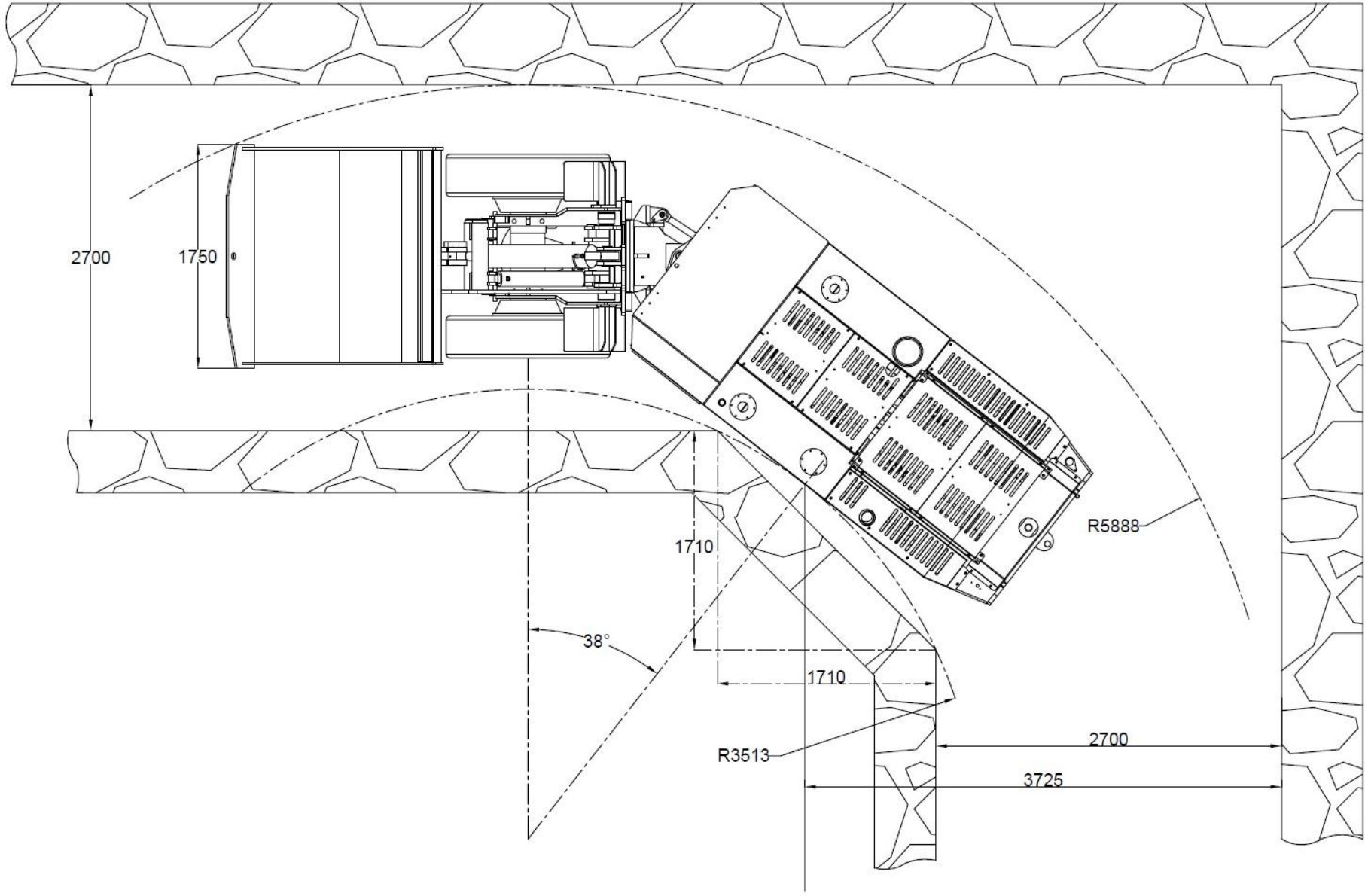
Push plate (bucket)

Production management system

OPTIONAL ENGINE (EURO 5, STAGE V)

Model	DEUTZ TCD 4.1 L4
Type	Turbocharged and Water-Cooled
Power	115kW@2300rpm
Max. Torque	609 Nm@1600rpm
Cylinder	In Line 4
Electrical	24 V
Emission	Stage V (Euro 5)
Air Intake	Low Position Turbocharger and Dry Type Air Filter (pre-filter) + Return and Intake Filtration
Exhaust System	Silencer + Diesel Oxidation Catalyst (DOC) + Diesel Particulate Filter (DPF) + Selective Catalytic Reduction (SCR) + Exhaust Gas Purification







KARER KARADAVUT ERDEM MAKİNA ENERJİ SANAYİ VE TİCARET LİMİTED ŞİRKETİ

+90 553 531 77 50 satis@karer.tr

Ostim OSB Mh. 1235. Cd. No:81 Yenimahalle / ANKARA

www.karer.tr